



## BAScontrol Toolset Quick Start Guide

*Thank You for installing the BAScontrol Toolset! You are ready to control without restrictions!*

*When installation is complete, the installed applications will be available in your Start Menu or on your desktop, depending on what you chose during the installation process.*

*The BAScontrol Toolset consists of:*

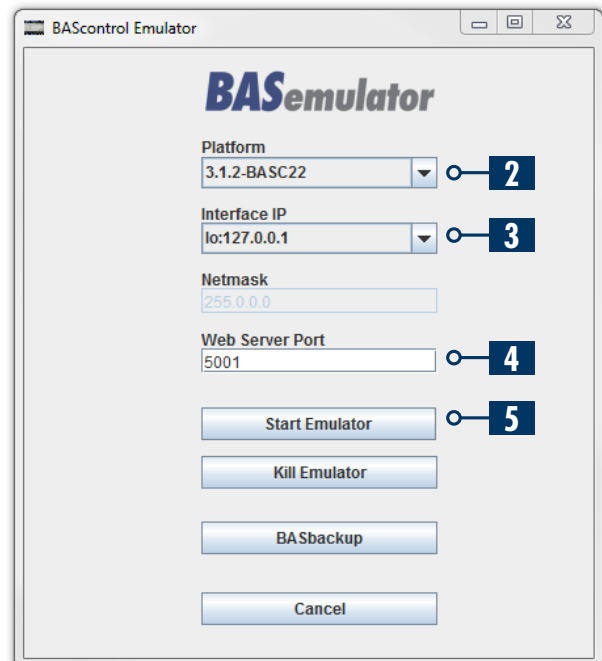
**Sedona Application Editor (SAE)** – used to connect to Sedona devices, program/edit FBD (Function Block Diagram) Sedona wire sheet control applications/ sequences of operation, and saving/uploading of local wire sheet application (SAX file) copies on a Windows PC/ laptop.

**BASemulator** – is a software emulator for the BAScontrol series which runs on Windows. This controller emulator allows you to write your Sedona wire sheet application and fully configure all parameters such as I/O Channel configuration, BACnet settings, and network settings on your PC before deploying onto real controllers.

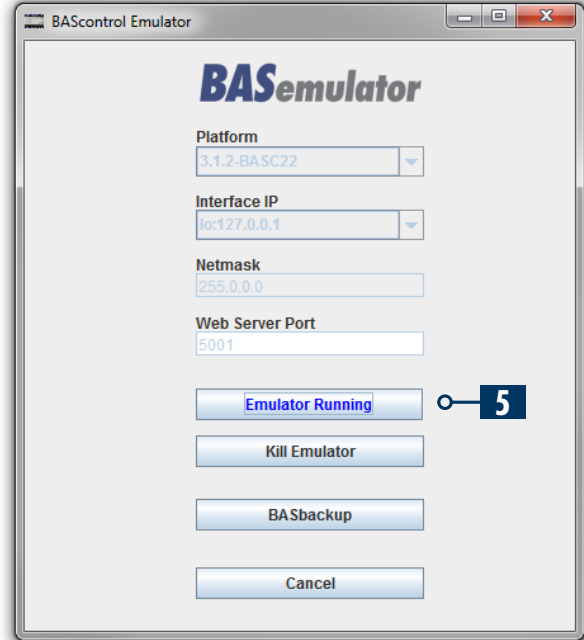
**BASbackup** – allows you to backup and restore Sedona wire sheet applications and complete device configuration to a single project file and use it between real controllers or emulated controllers (using BASemulator). In addition, it allows you to create a transferrable backup file which can be used to clone controllers or reproduce controllers with slightly altered settings.

### To get started with the Toolset:

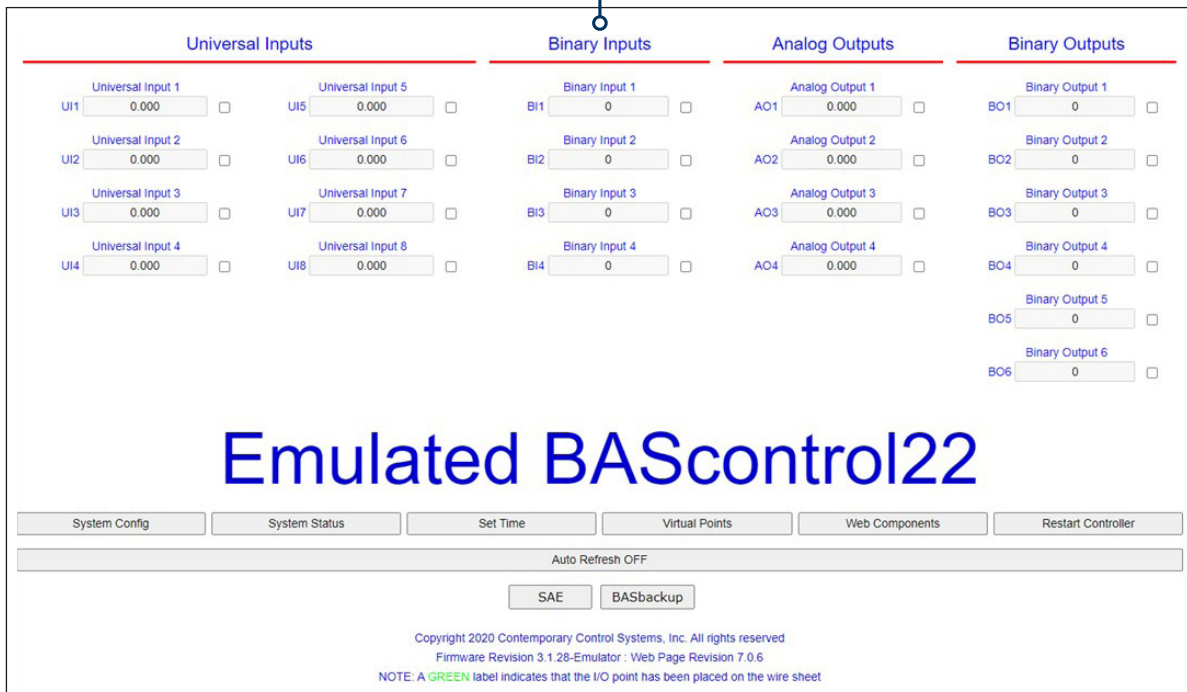
1. Launch the BASemulator program. It emulates the BAScontrol series so you can get started quickly. You must leave the emulator running in order to configure its web page settings and write Sedona logic.
2. Choose the platform to emulate (BASC-20, BASC-22, or BASpi)
3. Choose the Interface IP address to run the emulator on (127.0.0.1 is the default local address and usually does not need to be changed)
4. Choose a Web Server Port (5001 is the default port and usually does not need to be changed)



- Click “Start Emulator” to launch and the button will change state to “Emulator Running”.
- A web page “Emulated BAScontrolX” will be launched. You can configure I/O channels, BACnet, Network settings, and Web page configuration. All of these settings will be stored and available next time you launch the emulator. The emulator always runs on the specified IP address and port from the BASemulator program. The network settings in the System Config page in the emulator are only used to transfer to real controllers.

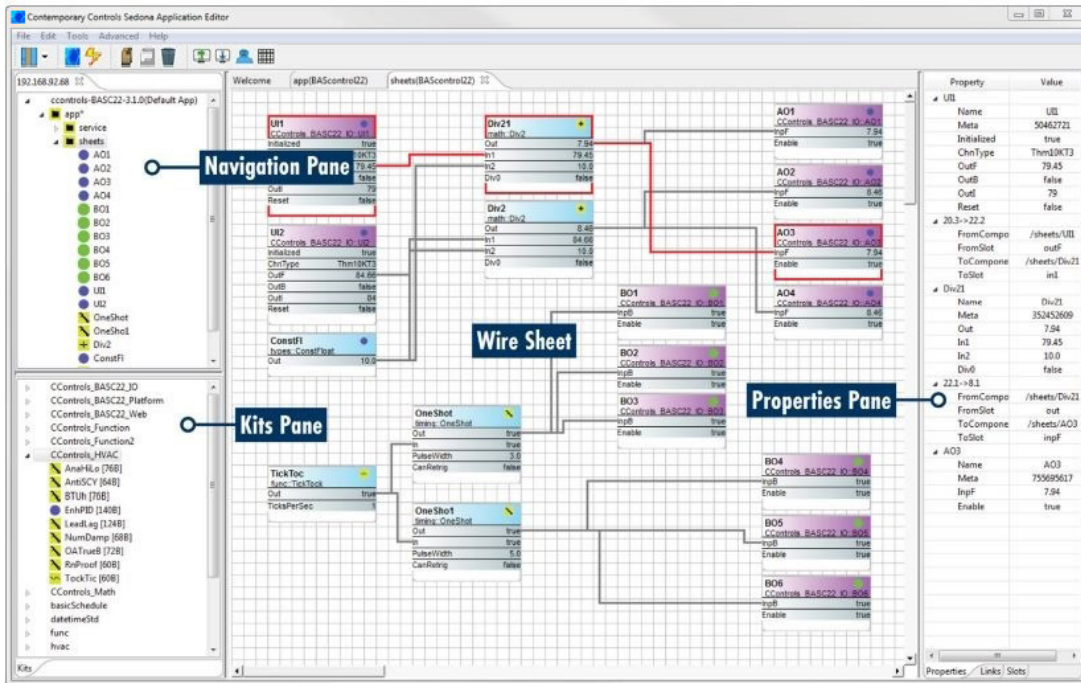


6

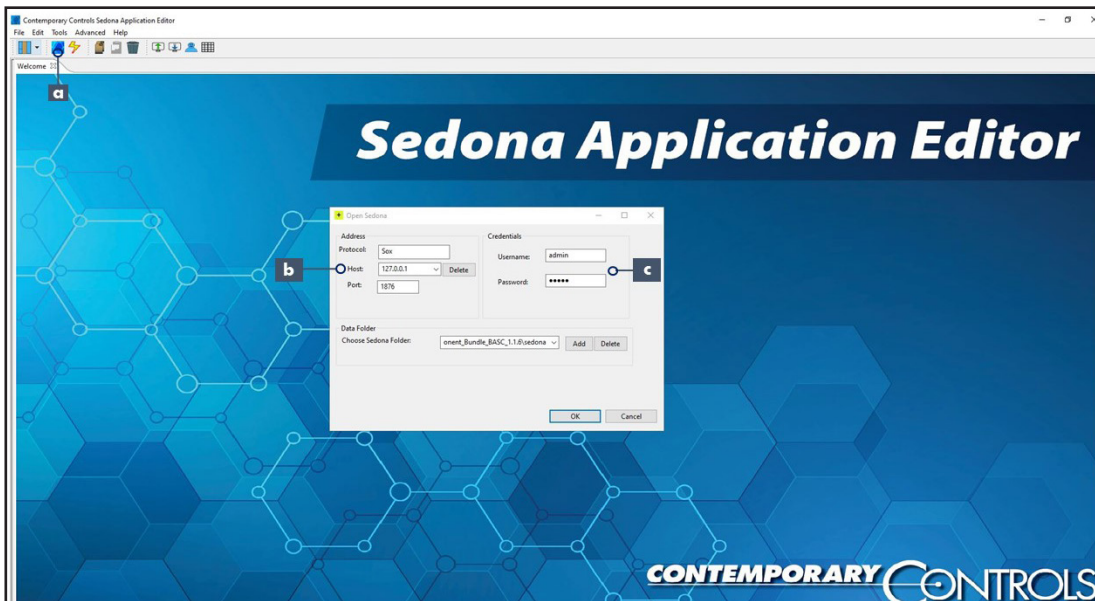


- You have a software emulated BAScontrol running on your PC! You are ready to program Sedona logic, configure Web page settings, and backup and restore your logic and settings to a real controller.

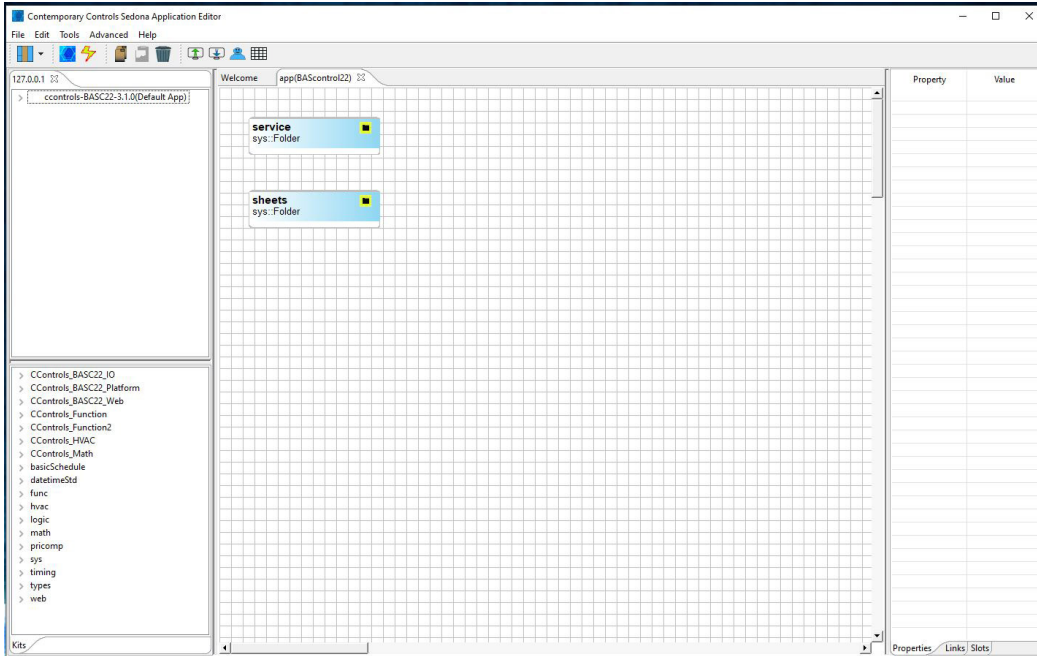
8. To program Sedona wire sheet applications, connect to the emulator using Sedona Application Editor (SAE).



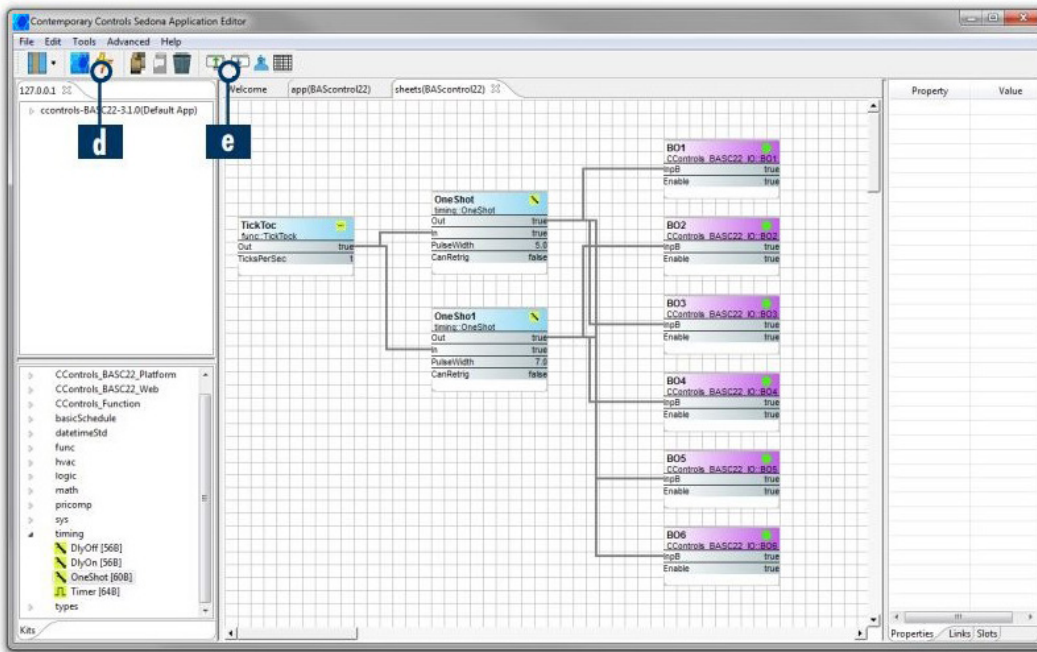
- Launch SAE and click the “Open Connection” button in the toolbar
- The entry 127.0.0.1 is always available in the “Host” drop-down selection and cannot be deleted. This is the default address for the BASemulator. Use this address to connect, unless you specified a different address when you launched the BASemulator.



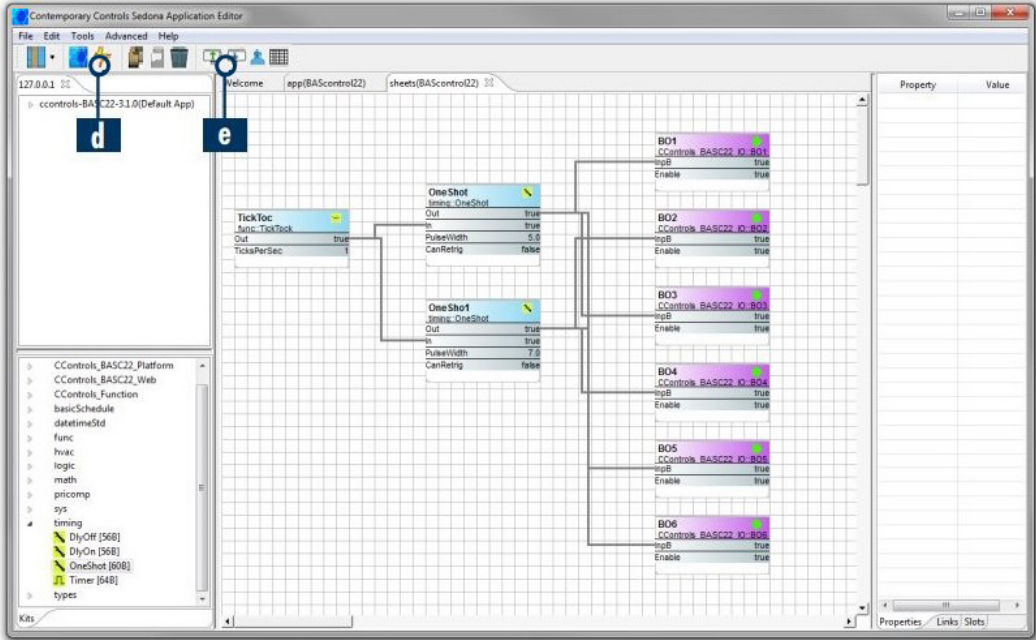
- c. The default credentials are “admin” for Username and “admin” for Password. Then click “OK” button to connect.



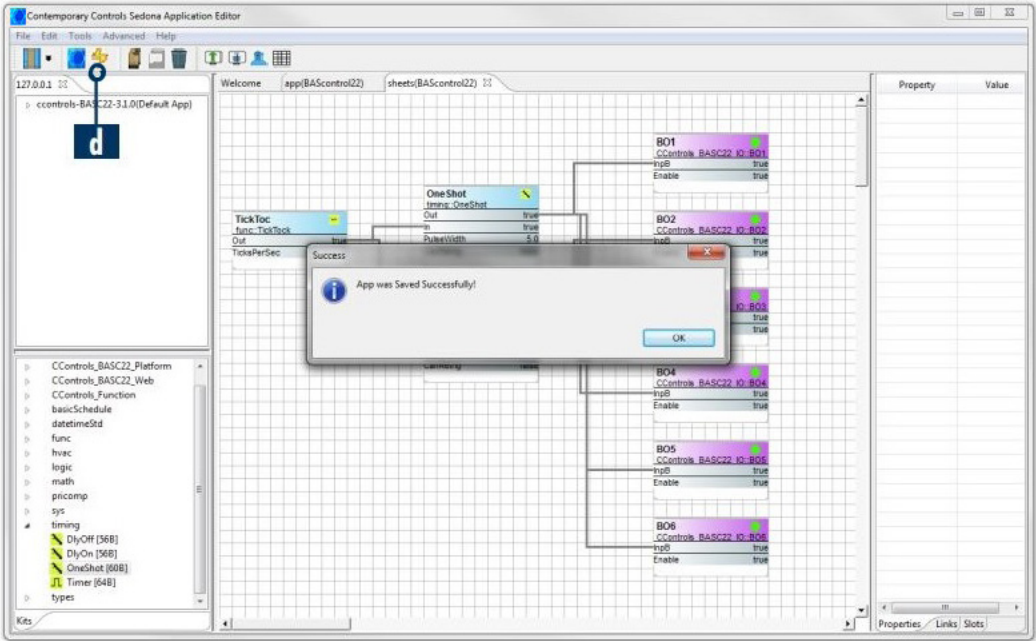
- d. You are now connected to the BASemulator and you are ready to program function block diagram applications using SAE. To save your application, click the “Save to Controller” button. The saved wire sheet application will be stored in the emulator.



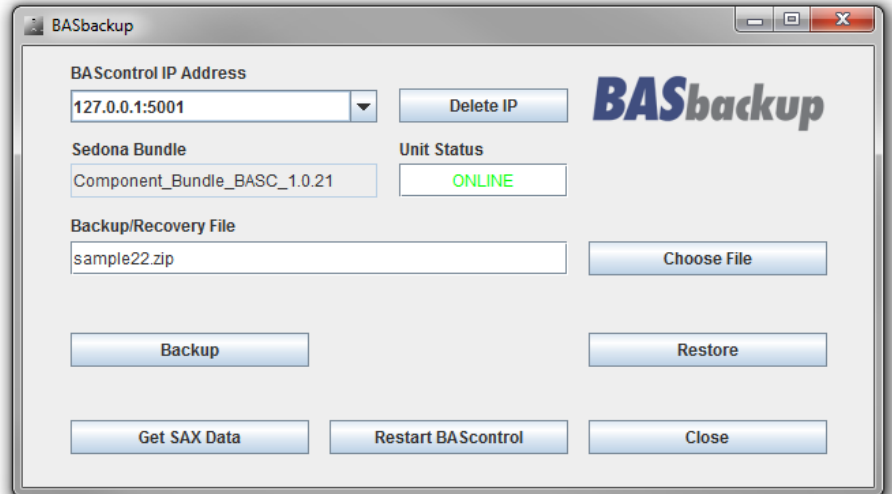
- e. You may load an existing Sedona application (SAX file) using the “Load from PC” button at the toolbar in SAE. The emulated web page is able to reflect changes as the Sedona application is running. To observe current I/O channel response on the web page click the “Auto Refresh” button to “ON” state.



NOTE: The "Save to PC" and "Load from PC" buttons only save/load Sedona wire sheet applications. To save/load Sedona wire sheet and device configuration together as a single project file, use BASbackup.



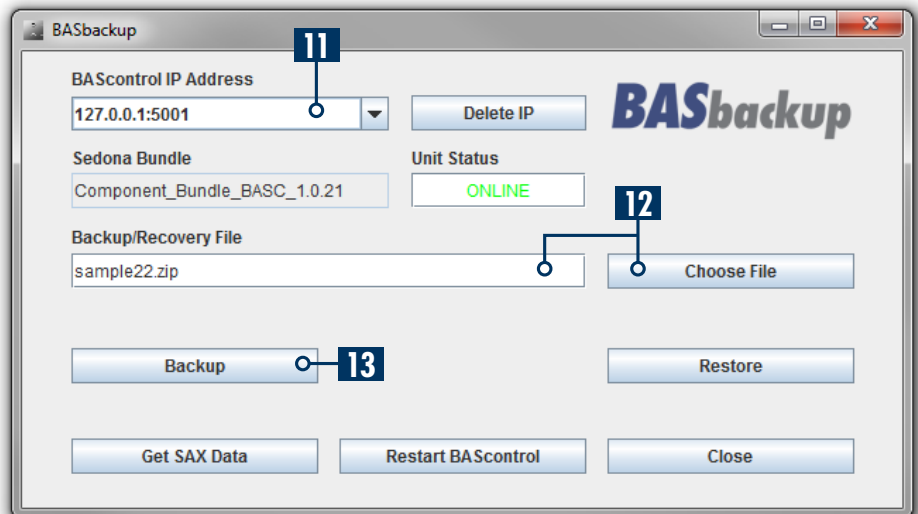
9. Once you have configured the emulated web page (I/O configuration, IP settings, BACnet settings, etc.), completed your Sedona wire sheet application, and you are satisfied with the overall emulated device setup, you are ready to backup the emulated application and configuration and restore it to a real controller to be installed in the field.
10. You may launch BASbackup using the “BASbackup” button in the BASemulator program, or you could launch it from the desktop or start menu shortcuts. The BASemulator must be running in order to be backed up.



- a. BASbackup also has a default entry in the “BAScontrol IP Address” field (127.0.0.1:5001) which cannot be deleted. Use this entry to backup/restore the emulator unless you specified a different address when you ran the BASemulator program.

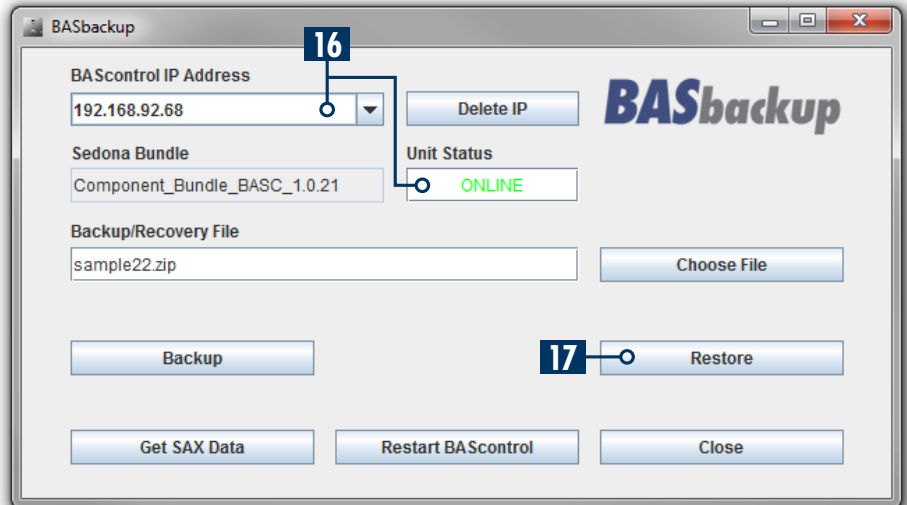
11. To backup the emulated configuration and Sedona wire sheet select the target device (in this case - BASemulator running at 127.0.0.1:5001). You will see “Unit Status” change to ONLINE.

12. Click the “Choose File”, a dialog window will open, enter a file name for the project. Click “Open” in the dialog window and the file will be created with the name given. This name will appear in the “Backup/Recovery File” field as your project backup file name. You may only work with one backup/recovery file and only one target device at a time.



13. Click the “Backup” button, authenticate (admin / admin – default credentials) and the backup process will begin. Status is printed in blue text below. Once the status is “Complete”, you have successfully backed up the Sedona Wire sheet and device configuration you created in the emulator. It is all stored in the project backup/recovery file.
14. You may keep the emulator running if you are going to perform more operations to the BASemulator. When you are done, you can close the Emulated Web Page and click “Kill Emulator” to terminate the program.
15. To restore the project file you just created to a real controller, power up and plug in your BAScontrol20 or 22 or BASpi and make sure your PC’s LAN card settings are set to the default subnet of 192.168.92.68 with netmask of 255.255.255.0

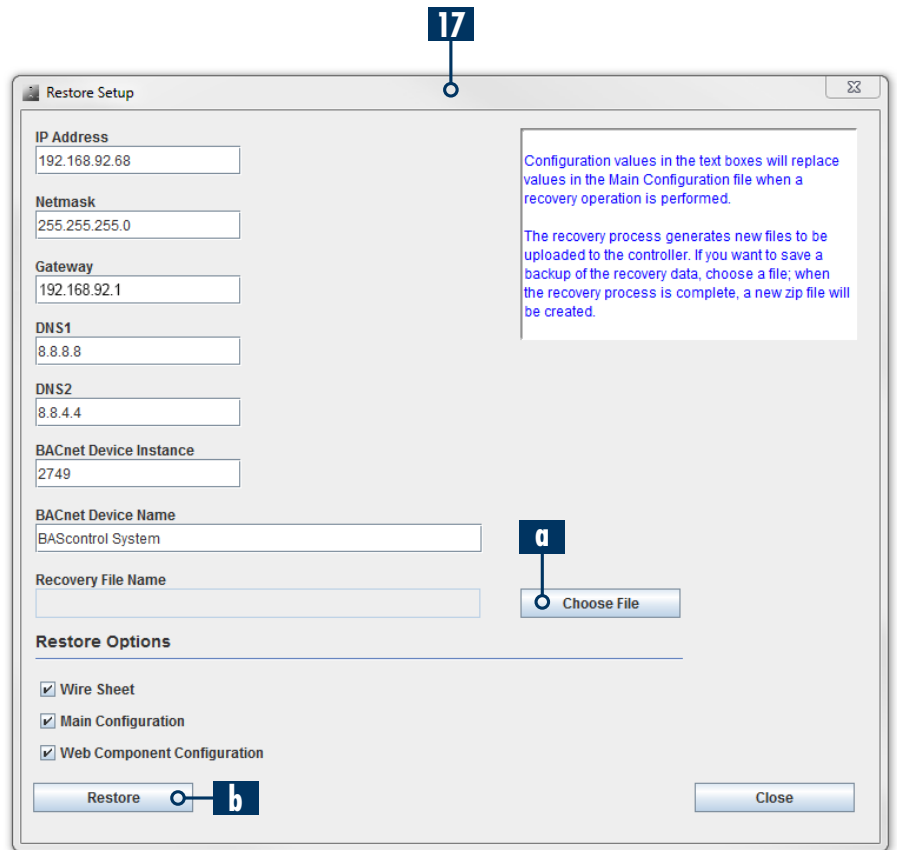
16. Enter the BAScontrol's IP address in the "BAScontrol IP Address" field in BASbackup program. You will see "Unit Status" change to ONLINE. This means that the BAScontrol unit is online and you are ready to restore the project file to it.



17. Click the "Restore" button. You will be presented with the "Restore" window. Here you will see the IP and BACnet configuration you had applied to the BASemulator's web page. You can keep it or you can alter it before you begin the restore process. This is the IP address the controller will use after the restore is complete and the unit is rebooted.

a. If you do make changes to the configuration at this "Restore" window and you would like to store a second copy of this backup/recovery project file with the alterations of IP settings you made in this "Restore" window, you may click "Choose File" in the "Restore" window and create a second file (must have a different name than original file) which will be saved with the settings in this window. This is really useful when commissioning multiple controllers in the field with the same Sedona application, but slightly different IP address, BACnet Device Instance, and BACnet Device Name which must be unique in real world networked applications.

b. If you do not want to make configuration changes or make a second copy of the recovery file, simply click the "Restore" button, authenticate (admin / admin - default credentials), and the project restore process will begin.

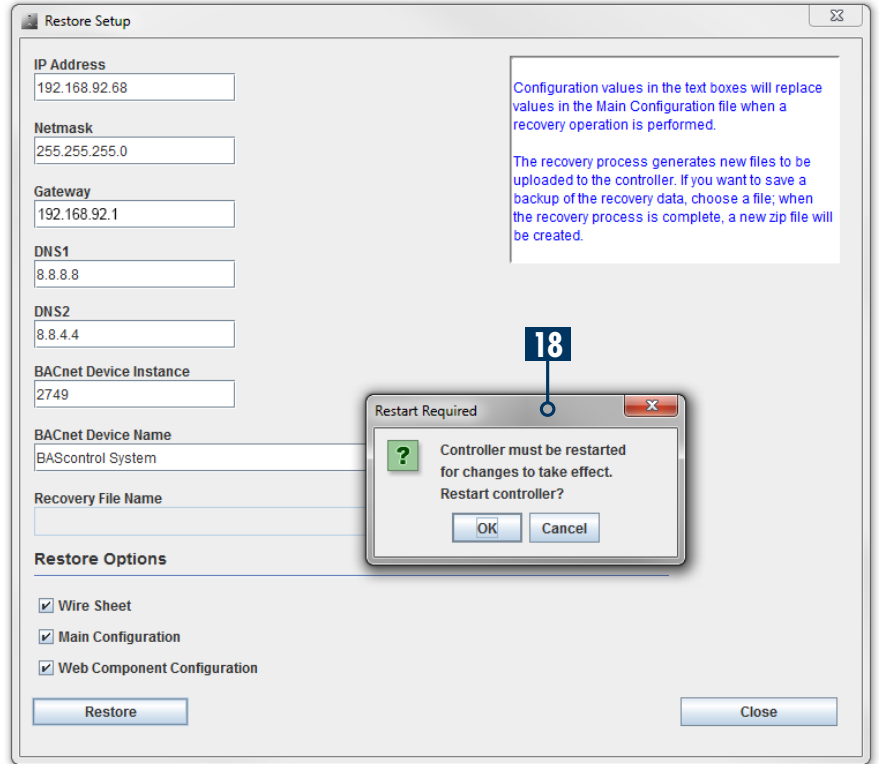


*NOTE: If you are changing the target's IP address by performing this restore operation, BASbackup will warn you. If you are about to overwrite a backup/recovery project file which already exists, BASbackup will warn you.*

18. When finished, you will be prompted to reboot the device in order for changes to take effect. Click "OK" to reboot now, or "Cancel" to reboot later.

You have successfully cloned your Sedona logic and device configuration from the BASemulator to a real BAScontrol device.

*NOTE: You may backup and restore projects between real controllers and BASemulator.*



BASbackup is able to backup any BAScontrol with firmware 3.1.x or higher. To restore projects, the backed up project file must go onto a controller of equivalent or higher firmware version (from old to new). For example:

If you have a 3.1.2 controller, you can back it up and restore it to a 3.1.2, 3.1.28, or to the BASemulator.

If you have a 3.1.26 controller, you can back it up and restore it only to a 3.1.28 controller, or to the BASemulator.



**United States**  
Contemporary Control  
Systems, Inc.

Tel: +1 630 963 7070  
Fax: +1 630 963 0109

[info@ccontrols.com](mailto:info@ccontrols.com)

**China**  
Contemporary Controls  
(Suzhou) Co. Ltd

Tel: +86 512 68095866  
Fax: +86 512 68093760

[info@ccontrols.com.cn](mailto:info@ccontrols.com.cn)

**United Kingdom**  
Contemporary Controls Ltd

Tel: +44 (0)24 7641 3786  
Fax: +44 (0)24 7641 3923

[info@ccontrols.co.uk](mailto:info@ccontrols.co.uk)

**Germany**  
Contemporary Controls GmbH

Tel: +49 341 520359 0  
Fax: +49 341 520359 16

[info@ccontrols.de](mailto:info@ccontrols.de)

[www.ccontrols.com](http://www.ccontrols.com)